



**TRANSPARENCY**





From the architect

Vertical Glass House was designed by Yung Ho Chang as an entry to the annual Shinkenchiku Residential Design Competition organized by the Japan Architect magazine in 1991. Chang received an Honorable Mention award for the project.

"Twenty-two years later in 2013, the West Bund Biennale of Architecture and Contemporary Art in Shanghai decided to build it as one of its permanent pavilions."

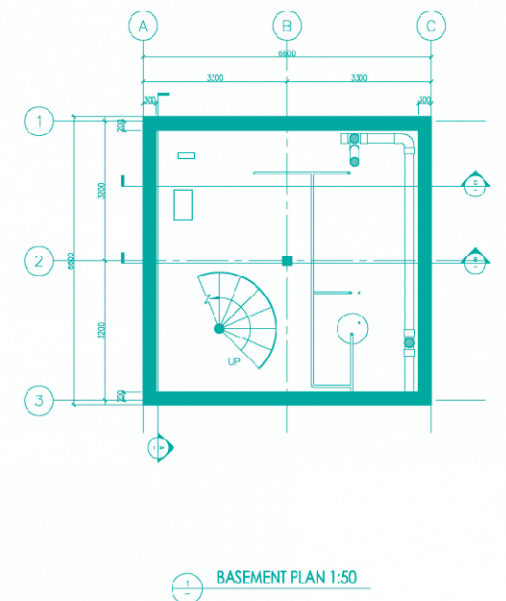
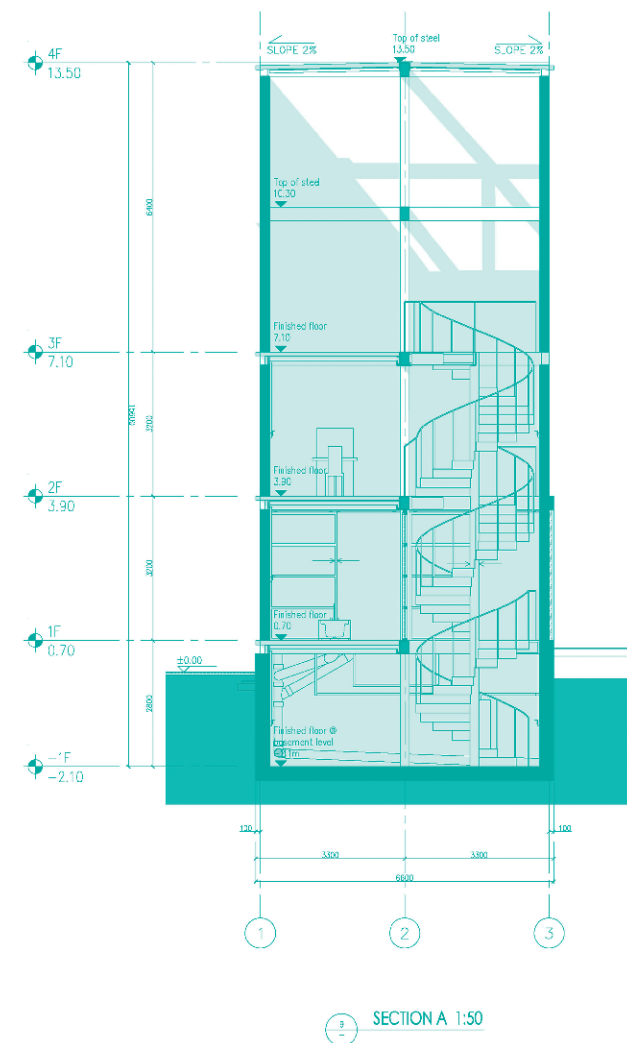
While turning the classic glass house 90 degrees, Vertical Glass House is on one hand spiritual: With enclosed walls and transparent floors as well as roof, the house opens to the sky and the earth,

"Vertical Glass House is a urban housing prototype and discusses the notion of transparency in verticality while serving as a critic of Modernist transparency in horizontality or a glass house that always opens to landscape and provides no privacy."

positions the inhabitant right in the middle, and creates a place for meditation. On the other hand, Vertical Glass House is material: Vertical transparency visually connects all the utilities, ductworks, furniture pieces on different levels, as well as the staircase, into a system of domesticity and provides another reading of the modern theory of "Architecture as living machine."

The structure erected in Shanghai in 2013 was closely based on the 22-years old design scheme by Chang and developed by the Atelier FCJZ. With a footprint of less than 40 square meters, the 4-story residence is

enclosed with solid concrete walls leaving little visual connection to its immediate surrounding. The walls were cast in rough wooden formwork on the exterior and smooth boards on the interior to give a contrast in texture in surface from the inside out. Within the concrete enclosure, a singular steel post is at the center with steel beams divide the space in quarters and frame each domestic activity along with the concrete walls. All the floor slabs for the Vertical Glass House, which consists of 7cm thick composite tempered glass slabs, cantilevers beyond the concrete shell through the horizontal slivers on the façade.



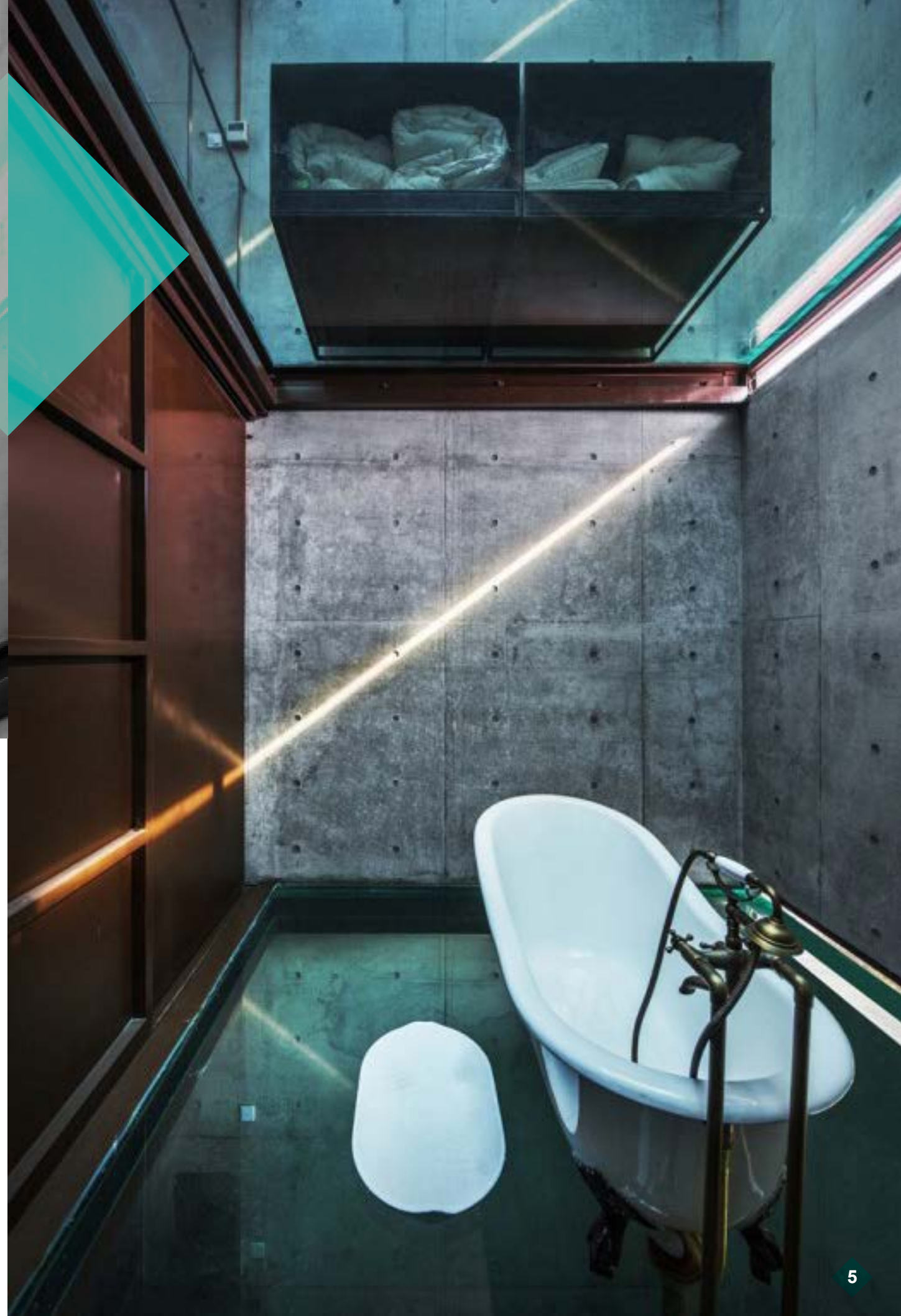




“The perimeter of each glass slab is lit from within the house; therefore, light transmits through the glass at night to give a sense of mystic for the pedestrians passing by.”

All the furniture were designed specifically for the rooms inside the Vertical Glass House to be true to the original design concept and keep a cohere appearance with its structures and stairs. Air conditioning was added to the House.

The Vertical Glass House will be operated by the West Bund Biennale as a one-room guest house for visiting artists and architects while serving as an architectural exhibition.







<b>Architects:</b>	Atelier FCJZ
<b>Location:</b>	Longteng Avenue, Xuhui, Shanghai, China
<b>Principal Architect:</b>	Yung Ho Chang
<b>Project Architect:</b>	Lu Bai
<b>Project Team:</b>	Li Xiang Ting, Cai Feng
<b>Client:</b>	West Bund
<b>Area:</b>	170.0 sqm
<b>Photographs:</b>	Courtesy of Atelier FCJZ



